

**CURSO**  
actualización  
de urgencias

*Para residentes*

*Formato sesiones*

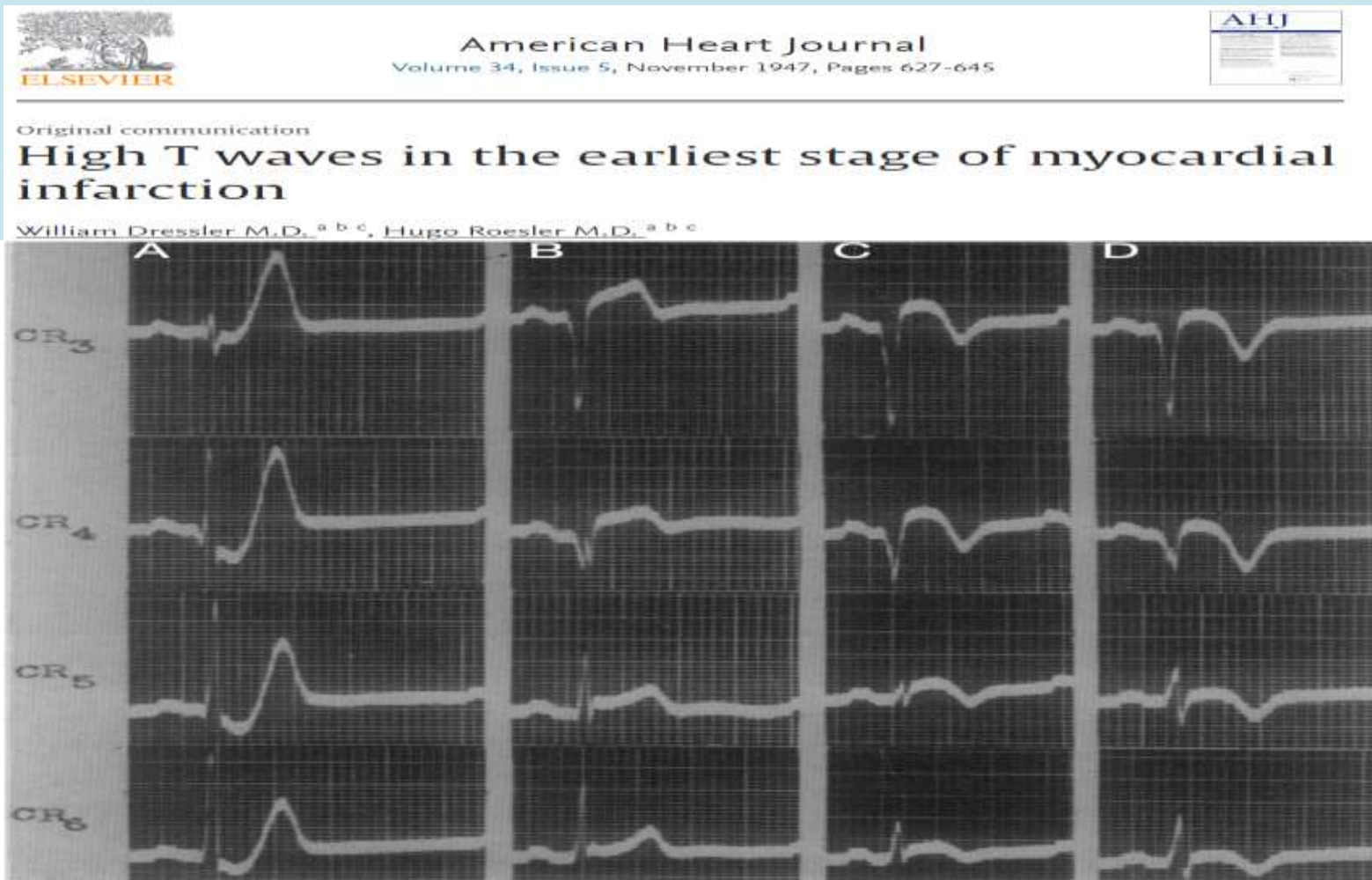
**Ondas T  
de Winter**



*Carlos Chavez F.*

**SERVICIO DE URGENCIAS  
CAULE**



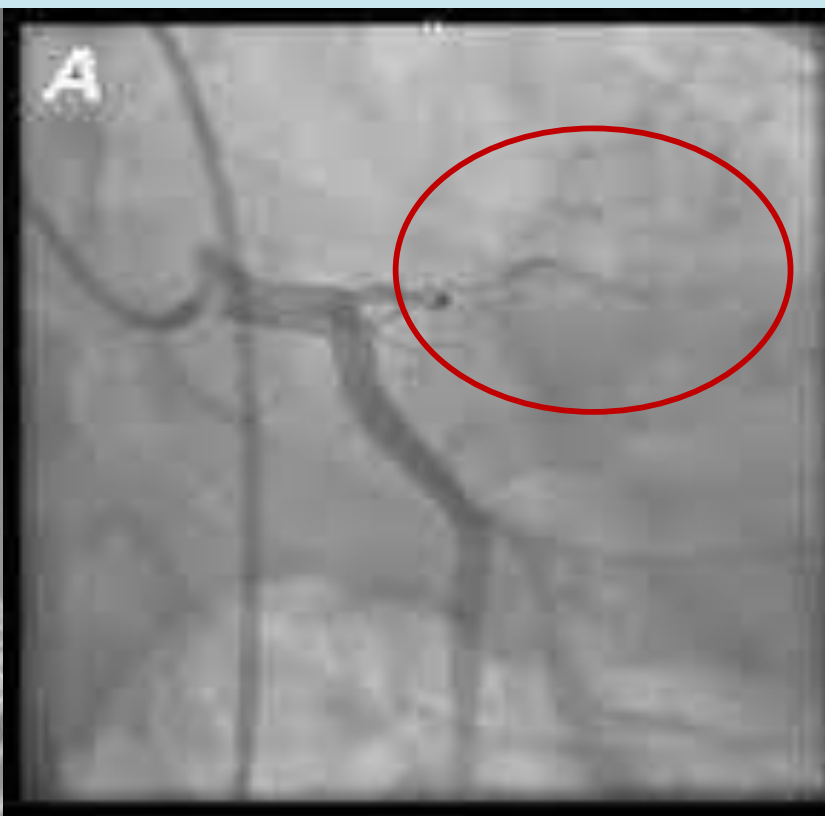


“ En cinco casos (18%), las ondas T hiperagudas no se relacionan con elevación del ST, no hay cambios del QRS. Esto representa como diagnóstico principal un signo precoz de infarto de miocardio ”...

## Ondas T de Winter



**Robert De Winter**  
(1958 -)



**30/1532 ( 2%) presentó oclusión de la DA**

de Winter RJ, Verouden NJ, Wellens HJ, Wilde AA. [A new ECG sign of proximal LAD occlusion](#). N Engl J Med. 2008 Nov 6;359(19):2071-3

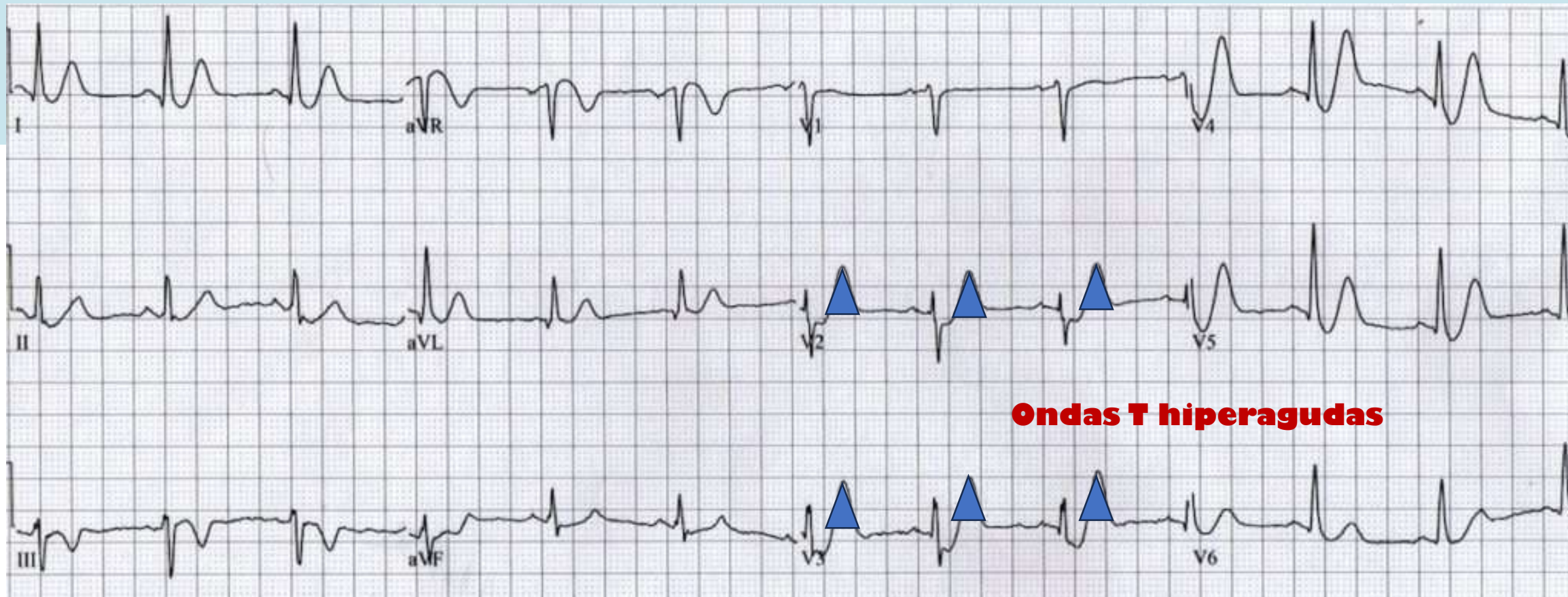
Mike Cadogan and Robert Buttner, "De Winter T Wave," In: *LITFL - Life in the FastLane*, Accessed on July 22, 2023, <https://litfl.com/de-winter-t-wave/>.



**Retraso en la repolarización en el área subendocárdica.**

## Ondas T de Winter

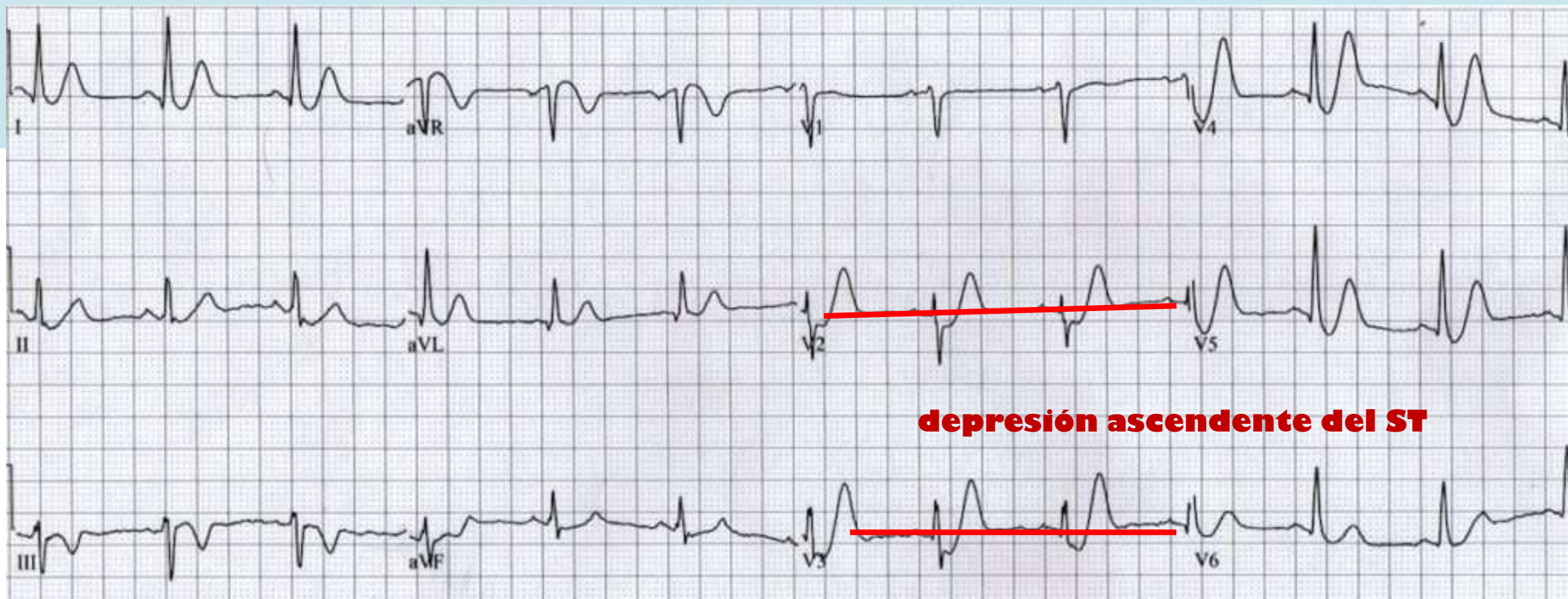
8/11





## Ondas T de Winter

9/11





GAME OF THRONES  
WINTER IS COMING



**ESC**

European Society  
of Cardiology

European Heart Journal (2020) **00**, 1–35

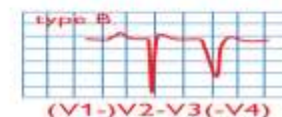
doi:10.1093/eurheartj/ehaa575

**ESC GUIDELINES**

# 2020 ESC Guidelines for the management of acute coronary syndromes in patients presenting without persistent ST-segment elevation: *supplementary data*

**The Task Force for the management of acute coronary syndromes in patients presenting without persistent ST-segment elevation of the European Society of Cardiology (ESC)**

e	De Winter ST-T	1–3 mm upsloping ST-segment depression at the J point in leads V1–V6 that continue into tall, positive, and symmetrical T waves	Proximal LAD occlusion/severe stenosis
f g	Wellens sign	isoelectric or minimally elevated J point (<1 mm) + biphasic T wave in leads V2 and V3 (type A) or symmetric and deeply inverted T waves in leads V2 and V3, occasionally in leads V1, V4, V5, and V6 (type B)	Proximal LAD occlusion/severe stenosis



*Muchas gracias.*

